

BOARD MEMBERS  
Andrew Tierney, Chairman  
Stan Soby, Vice Chairman  
Peter Hughes, Treasurer  
Susan Bransfield  
Rosemary Coyle  
Robert Smith  
David Cox  
Kate Morris



DIRECTOR of HEALTH  
Russell Melmed, MPH

Colchester, East Haddam, East Hampton, Hebron, Marlborough, & Portland

## How to Prevent and Eliminate Rats in Residential Settings with Integrated Pest Management (IPM)

### Goals:

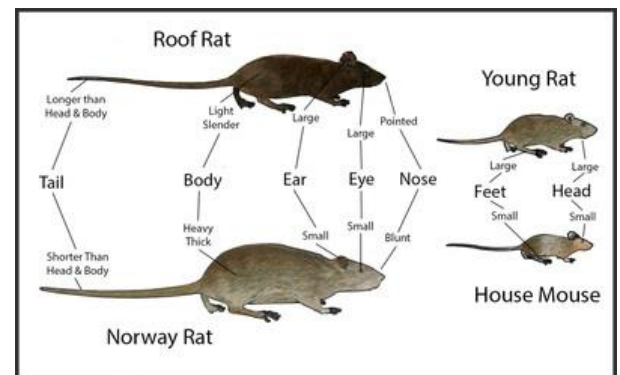
1. Eliminate rats from residential properties by removing what they like
  - a. FOOD SOURCES
  - b. SHELTER (burrows in and around foundations, walls, wood piles, and debris)
  - c. WATER SOURCES
2. Contact a Connecticut Licensed Pest Control Operator to exclude, trap, bait, and monitor once food and water sources are removed.
3. Utilize least toxic and most species-specific methods to eliminate rats.

Integrated Pest Management (IPM) is a holistic approach to pest control utilizing multiple techniques to reduce and manage pest populations

- Setting Thresholds
- Identification and Monitoring
- Prevention
- Control

### What do we know about Norway Rats?

1. Live 50-150' from their nests
2. Burrow around foundations and structures
3. Can enter openings as small as  $\frac{1}{2}$ "
4. Need a nearby and daily water source
5. Food high in protein and/or carbohydrates
6. Can carry various diseases
7. Can breed 12x per/yr. & 8-12 young per litter
8.  $\frac{3}{4}$ -1 lbs & tails shorter than body and head
9. Rats are not curious like mice and thus will only approach bait and traps when their food and water sources are reduced or eliminated.



[https://www.doyourownpestcontrol.com/roof\\_rats.htm](https://www.doyourownpestcontrol.com/roof_rats.htm)

## Easiest Prevention

### EXTERIOR

- Eliminate bird feeders and standing water (bird baths and containers that can hold water)
- Ensure recyclables are rinsed and put out the morning of trash day
- Ensure trash is bagged, put out the morning of trash day in covered trash cans
- Keep all pet food in sealed containers and inside the house
- Check for and repair leaky plumbing
- Eliminate leaf litter and debris around foundations
- Eliminate animal waste



### INTERIOR

- Keep all pet food in sealed containers and inside the house
- Check for and repair leaky plumbing
- Do not leave exposed food out in the open



## Moderate Prevention

### EXTERIOR

- Do not store firewood near the house, stack firewood on pallets
- Seal all holes where wiring or pipes enter the house or foundation
- Seal holes and gnaw marks in foundations and basements
- Check for and repair leaky plumbing
- Seal all holes where wiring or pipes enter the house or foundation
- Ensure gutters are cleaned and not leaking
- Ensure garage and screen doors are sealed
- Replace weather stripping and patch any holes

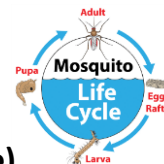


### INTERIOR

- Reduce clutter

## More Difficult Prevention

- Eliminating dead wood or decaying trees around the property.
- Repairing attic screens and flashing.
- Eliminating shrubs and vegetation around the foundation of the house.
- If rats persist when the previous have been done, contact a CT licensed pest control operator who specializes in rat extermination using Integrated Pest Management Techniques.



### How these preventions can help with other pests:

- Eliminating standing water reduces mosquito breeding (larvicide available).
- Removing leaves and debris eliminates harborage for mice (which carry ticks).

### What to do if you find a dead rat:

- Use disposable gloves and a shovel to scoop up the rat (avoid direct contact).
- Place the rat in a plastic bag, then place the bagged rat in a second plastic bag.
- Place the bagged rat in your trash for pick-up in a covered trash container.
- Remove and dispose of gloves in trash and wash your hand with soap and water for 20 seconds.

### What's Next?

- Once prevention methods have been conducted, and if rats persist, property owners should contact a CT licensed pest control operator.
- Pest control operators target burrows, nests, rat travel paths, food and harborage sources.
- They place and monitor traps and use CT DEEP approved baits/rodenticides in secure bait boxes (to exclude non-target animals).
- Speak to your pest control operator about the baits they use, how they work and any environmental risks to non-target species.
- Search for CT Licensed Pesticide Commercial Supervisors and Pesticide Businesses at <https://www.elicense.ct.gov/Lookup/LicenseLookup.aspx>, pesticides online at <http://www.kellysolutions.com/CT> or the CT DEEP Pesticide Management Program <https://portal.ct.gov/DEEP/Pesticides/Pesticide-Management-Program>.
- **PURCHASE AND PLACEMENT OF BAITS/RODENTICIDES MUST FOLLOW THE LABEL FOR THE AMOUNT, PLACEMENT AND USE. PESTICIDES ARE POISONS AND IMPROPER USE OR PLACEMENT CAN BE HAZARDOUS TO NON-TARGET ANIMALS. LEAVING RAT TRAPS OUTSIDE CAN ALSO HARM NON-TARGET ANIMALS SUCH AS DOGS AND CATS. A PROFESSIONAL IS YOUR BEST BET!!**

For more information, contact a CT licensed pest control operator,  
Chatham Health District at 860-365-0884 or visit our website at  
[www.chathamhealth.org](http://www.chathamhealth.org).

Revised 7/28/21