

CHATHAM HEALTH DISTRICT COVID-19 STATUS REPORT

Updated 03Mar2023

As of March 2, 3 Connecticut counties (Litchfield, Middlesex, New Haven) have a **MEDIUM COVID-19 community level** and 5 counties (Fairfield, Hartford, New London, Windham, Tolland) have a **LOW COVID-19 community level**. *You can read more about prevention steps recommended by CDC at different community levels here:* <https://www.cdc.gov/coronavirus/2019-ncov/science/community-levels-county-map.html>

- The average daily COVID-19 **case rate** in Chatham Health District this week **increased** to 5.2 cases/100000.
- The number of individuals currently **hospitalized** is 250. This is a **decrease** of **44** compared to last week.
- Fatalities **decreased** compared to the last week (42 this week compared to 75 last week).

Approximately 27% of Chatham Health District residents have received a bivalent booster dose.

CDC recommends one updated (bivalent) booster dose:

1. For everyone aged 5 years and older if it has been at least 2 months since your last dose.
2. For children aged 6 months–4 years who completed the Moderna primary series and if it has been at least 2 months since their last dose

https://www.cdc.gov/coronavirus/2019-ncov/vaccines/stay-up-to-date.html?s_cid=11747:latest%20covid%20booster:sem.ga:p:RG:GM:gen:PTN:FY22

In order to protect yourself and others from COVID-19:

- Stay up to date with your vaccinations.
- Get tested if you have symptoms.
- Wear a well-fitting mask when in public indoor settings, especially when they are crowded
- **STAY HOME if you are sick** or have tested positive for COVID-19 in the past 5 days, and DO NOT leave home until:
 - At least 5 days have passed since your symptoms began or since you tested positive,
 - you are feeling much better, and
 - no longer have a fever.

If you test positive and are more likely to get very sick from COVID-19, there are treatments available that can reduce your chances of being hospitalized or dying from the disease. These medications must be prescribed by a healthcare provider and started as soon as possible after diagnosis to be effective.

Contact a healthcare provider right away to determine if you are eligible for treatment, even if your symptoms are mild right now.

You can find a Test to Treat location here: <https://aspr.hhs.gov/TestToTreat/Pages/default.aspx>

Chatham Health District is coordinating vaccine clinics.

To see upcoming scheduled vaccine clinics in the district, visit our website: <https://www.chathamhealth.org/services-2>, or call 2-1-1.

If you or a loved one is homebound and is not up-to-date on COVID-19 vaccination, register here: <https://dphsubmissions.ct.gov/homebound>

The next report will be issued on Friday, April 7.

CHATHAM HEALTH DISTRICT COVID-19 STATUS REPORT

Updated 03Mar2023

Dashboard

DPH data published on 03/02/23

Town	County	CDC County Community Level*	Average Daily Case Rate #/100,000 population in the Past Week	Number of Cases in the Past Week **	Change in Number of Cases in the Past Week **
Colchester	New London	Low	3.6	<5	-2
East Haddam	Middlesex	Medium	11.1	7	3
East Hampton	Middlesex	Medium	4.5	<5	0
Hebron	Tolland	Low	6.0	<5	4
Marlborough	Hartford	Low	0.0	0	-4
Portland	Middlesex	Medium	6.2	<5	0
Chatham Health District	NA	NA	5.2	23	1
					Increased from previous week
					Decreased from previous week
					Unchanged from previous week

Data Source: <https://data.ct.gov/Health-and-Human-Services/COVID-19-Town-Level-Data/icxw-cada>

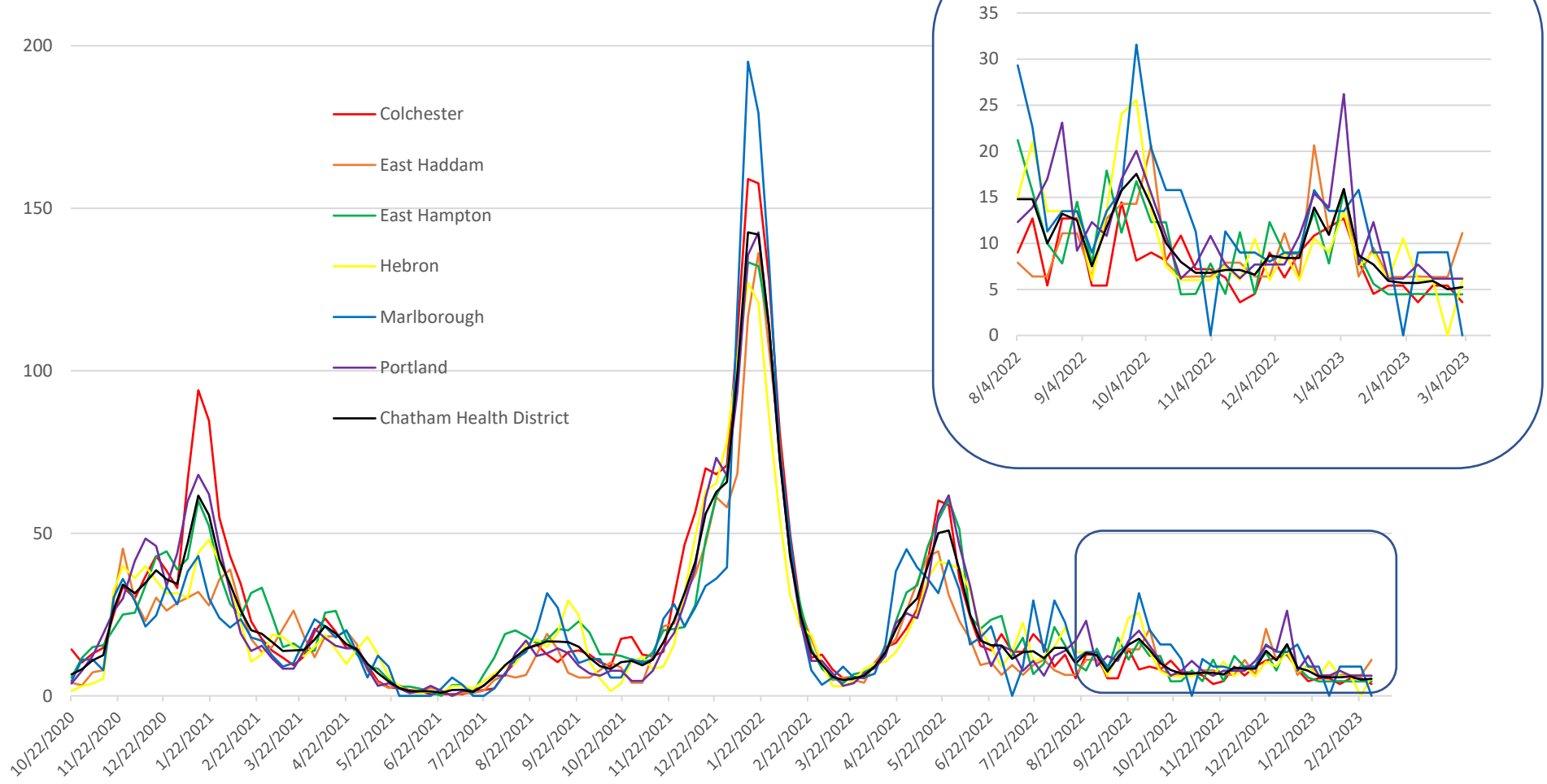
*Community Level Data Source: <https://www.cdc.gov/coronavirus/2019-ncov/your-health/covid-by-county.html>

**Prior to 6/30/2022, average daily case rate was calculated by DPH based on number of cases in the previous 14 days. Beginning on 6/30/22, DPH began reporting data from the previous 7 days. When the number of cases in the previous 7 days is less than 5, DPH suppresses the data. Chatham Health District will continue to report average daily case rate based on the number of cases in the previous 7 days and n=4 will be used for calculation of average daily case rate and change in number of cases for those towns.

CHATHAM HEALTH DISTRICT COVID-19 STATUS REPORT

Updated 03Mar2023

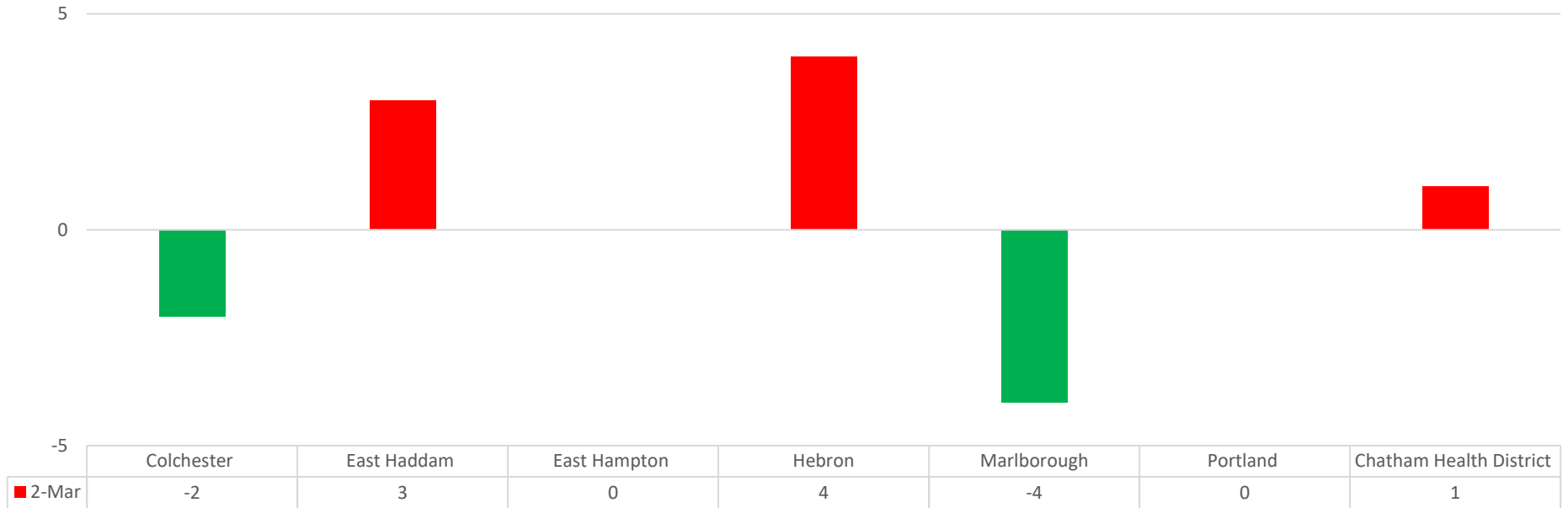
Average Daily Case Rate by Town (# of cases /100,000)



CHATHAM HEALTH DISTRICT COVID-19 STATUS REPORT

Updated 03Mar2023

Change in Number of Cases Reported by Town

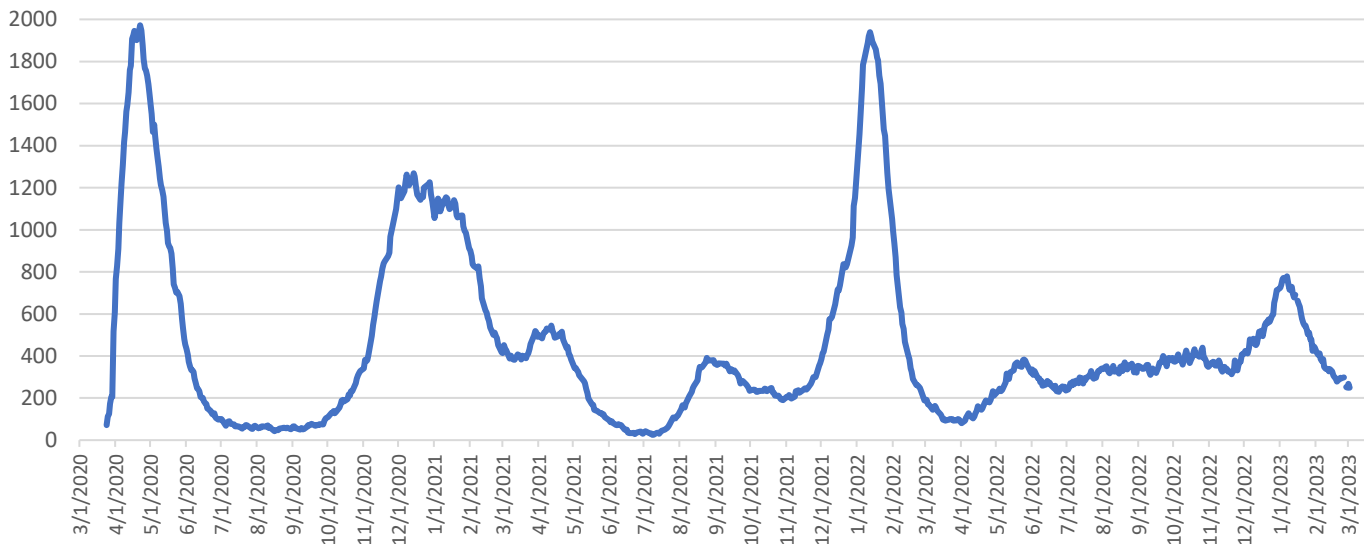


Source: <https://data.ct.gov/Health-and-Human-Services/COVID-19-Town-Level-Data/icxw-cada>

CHATHAM HEALTH DISTRICT COVID-19 STATUS REPORT

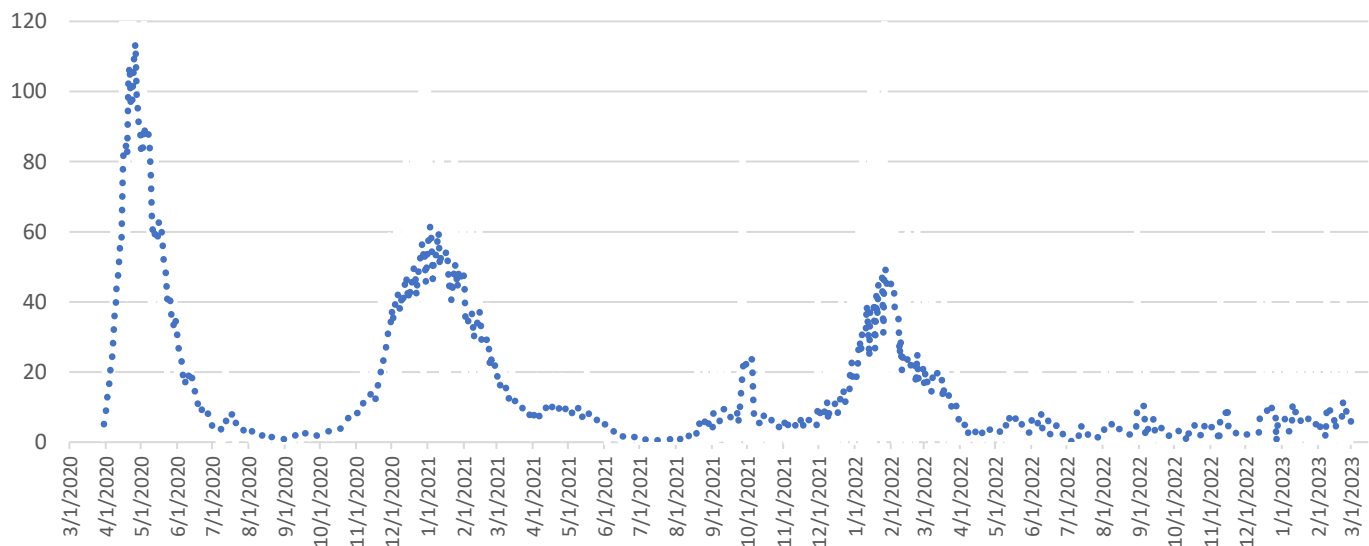
Updated 03Mar2023

Number of Patients Hospitalized with COVID-19 in Connecticut



Two hundred and fifty patients are currently hospitalized with laboratory-confirmed COVID-19. This is 44 fewer than last week.

Daily Number of Confirmed and Probable COVID-19 Deaths Reported in Connecticut (7 day rolling average)



There were 42 COVID-19 associated deaths reported in the past 7 days (compared to 75 reported last week).

Source: <https://data.ct.gov/Health-and-Human-Services/COVID-19-State-Level-Data/qmgw-5kp6>

CHATHAM HEALTH DISTRICT COVID-19 STATUS REPORT

Updated 03Mar2023

All Ages Vaccination Coverage as Reported by CT DPH on 03/01/2023.

As of 2/16/23, DPH began reporting the percentage of all residents who have received a bivalent booster.

Percent first dose, percent fully vaccinated, and percent additional dose will no longer be reported.

The table below has been updated to reflect this change in reporting.

Town	% of all residents who have Received Bivalent Booster
Colchester	26.5
East Haddam	25.2
East Hampton	26.2
Hebron	29.1
Marlborough	29.5
Portland	30.2
Chatham Health District	27
Connecticut	25

Sources:

<https://data.ct.gov/Health-and-Human-Services/COVID-19-Updated-Bivalent-Booster-Coverage-By-Town/bqd5-4jgh>

https://covid.cdc.gov/covid-data-tracker/#vaccinations_vacc-people-booster-percent-total